

# CreativeCastle.com

Beads with ♥ from our house to yours! ©

2321 Michael Drive  
Newbury Park, CA  
91320-3233

877 Beads4U (877-232-3748)

Phone: 805-499-1377

Fax: 805-499-7923

E-mail: [ctrripp@creativecastle.com](mailto:ctrripp@creativecastle.com)

Newsletter  
Wing '20  
(Winter-Spring)



Dear Beading Friends,

Happy Wing and Happy New Year! As I am writing this I find myself grateful for all the wonderful people I have met through beading. I appreciate your choice of continuing to support "your local bead store". If it were not for you we would not still be here. That being said, Creative Castle is still looking someone(s) to continue on the creative journey.

As we enter our 31st year, I'd like to ask you to consider being part of the 3/50 Project. It is a project created in 2010 by Cinda Baxter to save brick and mortar stores. The premise is to think about 3 independently owned businesses you'd miss most if they were gone and stop in say hi and pick up a little something as this is what keeps those businesses around. Spending \$50 locally will keep your local economy going. Here's a little factoid for you: For every \$100 spent in independently owned businesses, \$68 stays in the local economy, at a national chain \$43 stays here. If the money is spent online, nothing stays locally.

In addition to our twice monthly meetings of BATC (Beading at the Castle) on the second & fourth Tuesdays, we will be having a few added special BATC this season. Keep your eyes posted for the dates on the monthly calendars. I will also remind you in our weekly emails. If you are not getting these communications and would like to, please sign up the next time you are in the shop or send me an email and I will add you to our list.

Please be sure to check the Events page of our website. There you will find up to the minute information about trunk shows and special events that we are hosting. We will be having our New Year's Sale January 2-12. This year we are also hosting a Super Bead Day Party on February 2 from noon-5. (Just like a Super Bowl party but with beads!)

I want to wish all the Wing babies a very Happy Birthday. Remember to come in during the month of your birthday to receive 20% off one shopping trip to Creative Castle and we will punch your key tag for the amount of your purchase and if you fill up your card, you can redeem it during this shopping spree!

Please let us know if there is any beading need you have; we would like the opportunity to help. It is our goal to provide you with not only wonderful merchandise but also a fabulous environment in which to discover it as well as an extraordinary shopping experience.

Happy beading,

♥ Carole



Quote

"Reach high, for stars lie hidden in your soul. Dream deep, for every dream precedes the goal." - Pamela Vaull Starr

## Store Hours

Tue - Wed	10 - 6pm
Thursday	10 - 8pm
Fri - Sat	10 - 6pm
Sunday	12 - 5pm
Monday	Closed

## Events

### Come visit and see our wonderful Trunk Shows and events!

New Year's Sale, Jan 2-12

Special BATC, Jan 18 (11-5)

Super Bead Day, Feb 2 (noon-5)

Special BATC, Feb 9 (noon-5)

Jean Power Trunk Show, Feb 12-16

Heather Kingsley-Heath Trunk Show, Feb 26-Mar 1

Cynthia Rutledge Trunk Show, Mar 14

Sarah Thompson Trunk Show, Mar 20-22

Sabine Lippert Trunk Show, Mar 28-Apr 1

Robin Nadon Trunk Show, Mar 28 (10-5)

Betty Stephan Trunk Show, Apr 3-5

Anne Mitchell Trunk Show, Apr 23-26

(All trunk shows are during regular store hours unless noted above.)

## Our Wing Teachers:

Cliff Swain-Salomon

Liz Smith

Heather Kingsley-Heath

Betty Stephan

Cynthia Rutledge

Jean Power

Melanie Schow

Marlene McCall

Sabine Lippert

Carole Tripp

Linda Kavalsky

Corinne Loomer

Jo Ellen Lee

Sarah Thompson

Anne Mitchell

Inside this issue:

January

February

March

April

Techniques...Classes  
and MORE!



# January

New Year's Sale! Jan 2-12 (during regular store hours)



## Carole Tripp

### Peyote Bracelet

Wed 1/8 (10-1) OR (6-9)  
\$25.00 + supplies

Prerequisites: None  
Skill Level: All Skill Levels  
Technique: Peyote



Learn flat even count peyote stitch or practice your newly acquired skills while making this versatile bracelet.

Students will learn how to read a graph, make a picot edging and attach a multi-strand clasp.

### Square Stitch Bracelet

Wed 1/15 (10-1) OR (6-9)  
\$25.00 + supplies

Prerequisites: None  
Skill Level: Beginner  
Technique: Square Stitch



Learn the basics of this off loom stitch while making a bracelet. Square stitch has the look of loom work without those pesky warps. This technique is perfect for small pieces without warping a loom. Students will learn how to attach a clasp.



## Corinne Loomer

### Bead Embroidery Independent Study

Tue 1/7, 2/4, 3/3 and 4/7 (11-3)

\$150.00 for the series  
OR \$50 per class + supplies  
Prerequisites: Peyote  
Skill Level: All Skill Levels  
Technique: Peyote, Bead Embroidery



Be in control of your vision in this independent study. Learn focus, work independently, plan your creation, organize your ideas and make them a reality. Every month discuss various topics about Bead Embroidery.



## Cliff Swain-Salomon

Take 2 classes for \$185.00 ♦ Take all 3 classes for \$275.00

### Pearlesque Earrings

Fri 1/10 (10-5)  
\$95.00 + supplies

Prerequisites: Peyote  
Skill Level: Intermediate  
Technique: Peyote, Branch Fringe, Netting



To construct these earrings, traditional binding and fringing techniques used by passementiers in sixteenth century France are combined with peyote and netted bead weaving to construct these ornate earrings that can be worn in both casual and formal settings.

### Downton Deco Necklace

Sat 1/11 (10-5) \$95.00 + supplies

Prerequisites: Peyote, RAW, CRAW, PRAW  
Skill Level: Advanced  
Technique: Peyote, RAW, CRAW, PRAW (3&5 side)



Inspired by jewelry from the recent Downton Abbey film, this necklace is iconic of the Art Deco period. Swarovski-encrusted V-shaped darts grace the contour of the collarbone. Suspended from a seventh dart is a Kaleidoscope Swarovski crystal that reflects light from multiple directions.

### Dancing Wisteria

Sun 1/12 (10-5)  
\$95.00 + supplies

Prerequisites: Peyote, RAW, Herringbone  
Skill Level: Advanced  
Technique: Peyote, RAW, Twisted N'debele (Herringbone), Albion



The organic structures of this bracelet are a meditative exploration of freeform twisting N'debele. At the center, a captivating, hand-crafted, engraved cabochon with a branch motif is surrounded by lush fringe that moves like the wisteria that caught Cliff's eye in the garden.



## Jo Ellen Lee

### Traditional Knotting with a Contemporary Twist

Thu 1/23 (6-9)  
\$30.00 + supplies

Prerequisites: None  
Skill Level: All Skill Levels  
Technique: Knotting



Learn to knot a strand of pearls like a professional, make a double strand, or extended length necklace. Add crystals, gemstones or glass beads, to make a truly fantastic piece!



## Linda Kavalsky

### Explorations in Enameling

Sun 1/26 (10-5)  
\$80.00 + supplies  
+ \$18 materials fee

Prerequisites: Some Wire Work  
Skill Level: All Skill Levels  
Technique: Sheet Metal Manipulation, Enameling, Cold Connections



Learn different copper enameling techniques including mounting using micro bolts and cutout prongs.

### Beadiquette®:

- Please be mindful of instructors and fellow students by refraining from wearing fragrances to class, as participants with allergies and asthma could be affected.
- Please mute cell phone volume during class, and excuse yourself from the classroom when responding to or initiating cell calls.
- Please remember the class is a learning environment as well as a social time. Loud talking can be distracting and disruptive to your fellow students.

## Technique Classes

### Beading Basics with Marlene McCall

#### Beading Basics I

Thu 1/16 (6-9) OR  
Thu 2/6 (6-9) OR  
Thu 3/5 (6-9) OR  
Thu 4/16 (6-9)  
\$30.00  
supplies included  
Prerequisites: None  
Skill Level: Beginner

Learn the fundamentals of basic bead stringing AND basic wire-wrap techniques. Supplies, findings and tools are discussed. Learn the basics of stringing using various materials and to work with wire to combine it with chain and beads.

#### Beading Basics II

Call for availability  
\$30.00 + supplies

Prerequisites: Beading Basics I  
Skill Level: Advanced Beginner

Know the basics but want to make professional looking pieces? Need some information on French wire, cones, crimp covers, wrapping briolettes, bead tips, wiring leather cord and making decorative spirals? Learn these, plus a discussion on finishing your problem pieces.



### Registration:

#### Private Lessons

\$25.00 per hour

2 hour minimum

Take private lessons on any of the basic classes, get help with a class project.

Schedule one of our experienced bead artisans to assist you for a successful project outcome.

• Register by phone or in person.

• Pre-registration and payment in full at time of registration is required for all classes and workshops. Classes will cancel if not full and a refund given.

• 3 weeks notice of cancellation prior to the first class taught by a guest instructor is required. A guest instructor is anyone not employed by Creative Castle. Credit will be given toward a future class if the space can be filled. Instructions will be available to the student if the space cannot be filled.

• 72 hours notice of cancellation prior to other classes is required to receive credit toward a future class.

• Cancellations after 72 hour notice for other classes will receive credit for 1/2 class fee toward a future class.

• No show = no credit. Instructions from the class will be available.

## Seed Bead Series with Carole Tripp

### Peyote Bracelet

Wed 1/8 (10-1) OR (6-9)  
\$25.00 + supplies

Prerequisites: None  
Skill Level: All Skill Levels  
Technique: Peyote

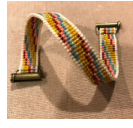


See description above under Carole Tripp.

### Square Stitch Bracelet

Wed 1/15 (10-1) OR (6-9)  
\$25.00 + supplies

Prerequisites: None  
Skill Level: All skill levels  
Technique: Square Stitch



See description above under Carole Tripp.

### RAW Embellished Bracelet

Wed 2/5 (10-1) OR (6-9)  
\$25.00 + supplies

Prerequisites: None  
Skill Level: All skill levels  
Technique: RAW



Learn right angle weave while crafting this bracelet. The abbreviation for right angle weave is RAW.

### CRAW Bracelet

Wed 2/19 (10-1) OR (6-9)  
\$25.00 + supplies

Prerequisites: None  
Skill Level: All skill levels  
Technique: CRAW



Learn cubic right angle weave while crafting this bracelet. The abbreviation for cubic right angle weave is CRAW.

### Herringbone Bracelet

Wed 4/15 (10-1) OR (6-9)  
\$25.00 + supplies

Prerequisites: None  
Skill Level: All skill levels  
Technique: Tubular Herringbone



Learn tubular herringbone also known as N'debele while making this fashionable bracelet.





## Jo Ellen Lee

**Chain Stitch Frenzy** Sat 2/1 (1-4)  
\$35.00 + supplies

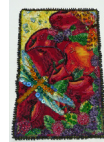


Learn to make a crocheted chain with beads for a bracelet, necklace or hat band. A variety of materials will be discussed including threads and beads for beautiful effects.

**Prerequisites:** Some Needle & Thread Handling or Crochet  
**Skill Level:** All Skill Levels  
**Technique:** Crochet

## Corrine Loomer

**Bead Embroidery Independent Study**



Tue 1/7, 2/4, 3/3 and 4/7 (11-3)  
\$150.00 for the series OR \$50 per class + supplies

**Prerequisites:** Peyote  
**Skill Level:** All skill levels  
**Technique:** Peyote, Bead Embroidery

This independent study course allows you to be in control of your vision. Learn to stay focused and work independently. Every month we'll discuss various topics about Bead Embroidery.

## Carole Tripp

**RAW Embellished Bracelet**



Wed 2/5 (10-1) OR (6-9)  
\$25.00 + supplies

**Prerequisites:** None  
**Skill Level:** Beginner  
**Technique:** RAW

Learn RAW while making this bracelet. Learn to embellish RAW with crystals and attach a tube clasp. The abbreviation for right angle weave is RAW.

**CRAW Bracelet**



Wed 2/19 (10-1) OR (6-9)  
\$25.00 + supplies

**Prerequisites:** None  
**Skill Level:** Beginner  
**Technique:** CRAW

Learn the basics of CRAW while making a bracelet. Using various beads and bead sizes create different looks. The abbreviation for cubic right angle weave is CRAW.

## Melanie Schow

**Victorian Pearl** Sat 2/22 (10-5)  
\$80.00 + supplies



**Prerequisites:** Wire Basics  
**Skill Level:** All Skill Levels  
**Technique:** Production Jump Rings

Create this delicate necklace of interconnected jump rings dripping with pearls. Learn the technique for mass producing quality jump rings and how to properly open and close them.

## Jean Power

Take 2 classes for \$185.00 ♦ Take 3 classes for \$275.00  
Take 4 classes for \$360.00 ♦ Take all 5 classes for \$445.00

**Ligilo**

Wed 2/12 (10-5) \$95.00 + supplies



**Prerequisites:** Peyote  
**Skill Level:** Advanced  
**Technique:** Peyote

Create this unique necklace with a crystal centerpiece and beaded chain and clasp. Each component can be used separately for pendants or beaded chains as desired.

**Lisa Class**

Thu 2/13 (10-5) \$95.00 + supplies



**Prerequisites:** Peyote  
**Skill Level:** Advanced  
**Technique:** Peyote

The Lisa class covers all of the different techniques used to make & unite beaded components so that you can make your own unique jewelry.

**Jean Power Trunk Show**  
Feb 12-16  
(during regular store hours)

**Karratu**

Fri 2/14 (10-5)  
\$95.00 + supplies



**Prerequisites:** Peyote  
**Skill Level:** Intermediate  
**Technique:** Peyote

This class covers beading unique & versatile crystal components that can be turned into bracelets, pendants, necklaces, charms, earrings, beaded balls... and much more!

**Treasure Links**

Sat 2/15 (10-5)  
\$95.00 + supplies



**Prerequisites:** Peyote  
**Skill Level:** Intermediate  
**Technique:** Peyote

Treasure Links is a versatile and variable project based on multiple components using Miyuki seed beads and Swarovski Crystal pearls (2mm and 8mm). The class covers beading components, including full details on creating 3 different necklaces.

**MidMod Pots**

Sun 2/16 (10-5)  
\$95.00 + supplies



**Prerequisites:** Peyote  
**Skill Level:** Advanced  
**Technique:** Peyote

MidMod Pots is a series of beaded pots combining geometric beadwork, floral motifs and patterning. All the basics are covered as well as specific pots so you can choose which you begin in class.

## Heather Kingsley-Heath

Take 2 classes for \$185.00 ♦ Take 3 classes for \$275.00  
Take 4 classes for \$360.00 ♦ Take all 5 classes for \$445.00

**Viola**

Wed 2/26 (10-5) \$95.00 + supplies



**Prerequisites:** Peyote, RAW  
**Skill Level:** Intermediate,  
Confident with Thread Tension  
**Technique:** Peyote, RAW, Netting

Viola is a set of motifs that can be worked as bracelets, pendants and necklaces, in many different combinations. Learn a quick and easy bezel for Rivolis and Chatons, crystal links and RAW connections.

**Fragmentary Relic**

Thu 2/27 (10-5) \$95.00 + supplies



**Prerequisites:** Peyote,  
Ladder Stitch, Albion Stitch  
**Skill Level:** Advanced  
**Technique:** Peyote, Netting, Albion Stitch

Learn a combination of stitches to showcase oversize drop beads and 14mm rivoli. Detail is picked out in contrasting and colourful bead combinations. This is an intricate stitch combination suitable for experienced beaders.

**Heather Kingsley-Heath Trunk Show**

Feb 26-Mar 1  
(during regular store hours)

**Annecy**

Fri 2/28 (10-5)  
\$95.00 + supplies



**Prerequisites:** Peyote, RAW, Albion Stitch  
**Skill Level:** Intermediate,  
Confident with Thread Tension  
**Technique:** Peyote, RAW, Albion Stitch

The medieval buildings reflected in the blue waters of lake Annecy were the inspiration for this pendant design. Embellished with tiny crystal mesh elements, the pendant hangs from a chain intersected with beaded beads.

**Verona**

Sat 2/29 (10-5)  
\$95.00 + supplies



**Prerequisites:** Peyote, Netting, Albion Stitch  
**Skill Level:** Intermediate,  
Confident with Thread Tension  
**Technique:** Peyote, Netting, Albion Stitch

Bead embroidered onto a Jacquard ribbon base, this cuff combines chains, beads and crystals. Quick to make, and simple enough for even those with very little experience with bead embroidery.

**Constanza**

Sun 3/1 (10-5)  
\$95.00 + supplies



**Prerequisites:** Peyote, RAW, Albion Stitch  
**Skill Level:** Intermediate,  
Confident with Thread Tension  
**Technique:** Peyote, RAW, Netting, Albion Stitch

Inspired by the Passementerie found in a tiny store in Venice, this silk pod is easy to construct and is a delightful shape to embellish with crystal encrusted beadwork.



# March

Heather Kingsley-Heath Class Mar 1 (see February page for details)



## Corinne Loomer

### Bead Embroidery Independent Study

Tue 1/7, 2/4, 3/3 and 4/7 (11-3)  
\$150.00 for the series OR \$50 per class + supplies

Prerequisites: Peyote  
Skill Level: All skill levels

Technique: Peyote, Bead Embroidery



Unlike a highly structured class this independent study course allows you to be in control of your vision. Learn to stay focused, work independently, plan your creation, organize your ideas and make them a reality. Every month we'll discuss various topics about Bead Embroidery.



## Jo Ellen Lee

### Traditional Knotting with a Contemporary Twist

Thu 3/30 (6-9)  
\$30.00 + supplies

Prerequisites: None  
Level: All Skill Levels  
Technique: Knotting



Learn to knot a strand of pearls like a professional, make a double strand, or extended length necklace. It doesn't have to be just your mother's pearls, give it spunk, sparkle, and texture! Add crystals, gemstones or glass beads, to make a truly fantastic piece!



## Cynthia Rutledge

Take 2 classes for \$185.00 ♦ Take 3 classes for \$275.00  
Take all 4 classes for \$360.00

### The Secret Lies Within

Thu 3/12 (10-5)  
\$95.00 + supplies

Prerequisites: Peyote  
Level: Advanced  
Technique: Peyote, Peyote Variation



A personal piece, this locket can be presented on a cuff bracelet (in this case) or on a necklace. Photographs are protected with a laminating film then supported and beveled in peyote stitch. The two halves are connected, embellished, and in this case attached to a beaded cuff.

### Feathers of the Peacock

Fri 3/13 (10-5)  
\$95.00 + supplies

Prerequisites: Peyote  
Level: Intermediate/Advanced  
Technique: Peyote, Peyote Variation



Three "feather" shapes are filled with embellished Swarovski pearls and linked together for a fabulous focal point. All of the feather shapes and the necklace straps are created in CRAW. The pearl embellishments, buttons and the necklace connector utilize peyote stitch, netting and embellishing techniques.

### A Cut Above

Sat 3/14 (10-5)  
\$95.00 + supplies

Prerequisites: Peyote  
Level: Intermediate/Advanced  
Technique: Peyote, Netting



Each tassel consists of three shaped components, laced together to form "windows" of color and structure. At the top of each of the tassels is a four-sided CZ beaded bead, reflecting light as it is worn. The chain is a filled-netting, evoking the style of leaded glass, and ending in a sliding clasp.

### Arabesque Collar

Sun 3/15 (10-5)  
\$95.00 + supplies

Prerequisites: Peyote, CRAW  
Level: Advanced  
Technique: Peyote, CRAW



Thin copper patina is the base of the central component, cut to an oval shape and decorated with a beautifully beveled CZ, using peyote stitch. The CZ bezel is embellished with pearls and crystals. CRAW, using fire polish beads, is used to create curved 3-D components that are then laced together to create a form-fitting collar. The collar ends in a simple closure, allowing the design to flow around the neck. Art Deco style meets the 21st century!

Cynthia Rutledge Trunk Show Mar 14 (during regular store hours)



## Sarah Thompson

Take 2 half day classes for \$95.00 ♦ Take 1 1/2 classes for \$140.00  
Take 2 days for \$185.00 ♦ Take 2 1/2 days for \$230.00 ♦ Take all classes for \$275.00

### Entangled Pendant

Fri 3/20 (10-1)  
\$50.00 + supplies

Prerequisites: Basic Wire  
Level: Intermediate  
Technique: Modified Soumak Weave, Layering, Forging



A fun class where you learn the weave, hammering techniques and how to use annealing to enhance your design.

### Mini Monogram Pendant

Fri 3/20 (2-5)  
\$50.00 + supplies

Prerequisites: Modified Soumak Weave  
Level: Intermediate  
Technique: Modified Soumak Weave, Layering, Forging



This class is an introduction into fusing on top of the weave. Learn the weave and make a simple monogram design. The students will make just one pendant in class.

### Simplicity Pendant

Sat 3/21 (10-5)  
\$95.00 + supplies

Prerequisites: Modified Soumak Weave  
Level: Beginner/Intermediate  
Technique: Modified Soumak Weave, Fusing



Learn the basics of fusing on top of the weave. Make two small pendants to practice this technique. We will also take the time to learn and practice the weave before starting our pendants.

### Serenity Pendant

Sun 3/22 (10-5)  
\$95.00 + supplies

Prerequisites: Modified Soumak Weave  
Level: Intermediate  
Technique: Modified Soumak Weave, Layering, Fusing



Learn how to fuse and build depth with fusing techniques on top of the weave. Make several small pendants so you can practice this technique and perfect it in class.

Sarah Thompson Trunk Show Mar 20-22 (during regular store hours)



## Sabine Lippert

Take two 1 day classes for \$185.00 ♦ Take three 1 day classes for \$275.00  
Take Master Class +1 day for \$365.00 ♦ Take Master Class +2 days for \$450.00 ♦ Take all classes for \$530.00

### A Master Class: Double CRAW Dimensions

Sat 3/28 AND Sun 3/29 (10-5)  
\$275.00 + supplies

Prerequisites: Fluency with CRAW  
Level: Advanced  
Technique: Beadweaving, CRAW, Double CRAW



DCRAW is a rather new technique, that offers a multitude of possibilities when it comes to three dimensional beadwork. Learn the technique shown in different projects, and learn to create your own three dimensional pieces.

### Monique

Tue 3/31 (10-5)  
\$95.00 + supplies

Prerequisites: RAW  
Level: Advanced  
Technique: RAW, Beadweaving



A sparkling necklace, combining different focals to create a decorative piece.

### The Duchess of D

Wed 4/1 (10-5)  
\$95.00 + supplies

Prerequisites: Raw, CRAW  
Level: Intermediate/Advanced  
Technique: CRAW, Double RAW



This double faced pendant is made from a 27mm rivoli, embellished with delicate little arcs all around. It can be reversible as well!

### Rising Sun

Tue 3/31 (10-5) OR  
Wed 4/1 (10-5)  
\$95.00 + supplies



A variety of connections RAW, CRAW give this piece a gentle drape around your wrist. The filigree focal in the center makes this piece lightweight and nice to wear.

Sabine Lippert Trunk Show Mar 26-Apr 1 (during regular store hours)



 **Betty Stephan**

Take 2 classes ~ \$185 ♦ Take 3 classes ~ \$275

**Nightingale Necklace**

**Fri 4/3 (10-5)**  
**\$95.00 + supplies**  
 (kit available)

**Prerequisites:**  
 Tubular Peyote  
**Skill Level:**  
 Intermediate

**Technique:** Bead Embroidery,  
 Bead Weaving

Learn to bezel a rivoli with bead embroidery, dimensional techniques and combining bead weaving and embroidery. The neck chain is a variation of herringbone using Super duos, seed beads and crystals.

**Gaia**

**Sat 4/4 (10-5)**  
**\$95.00 + supplies**  
 (kit available for \$110.00)

**Prerequisites:**  
 Some Beadweaving  
 Experience,  
 Tubular Peyote  
**Skill Level:** Intermediate  
**Technique:**  
 Bead Embroidery

Learn two different techniques for cabochon bezeling. Create a spiral that is reflected in the various stitches surrounding the cabochons. Learn an easy but unusual fringe technique. Discuss how to make a fringe that hangs correctly from a pointed component.

**Ariana**

**Sun 4/5 (10-5)**  
**\$95.00 + supplies**  
 (kit available for \$70.00)

**Prerequisites:** Some  
 Beadweaving Experience,  
 Tubular Peyote  
**Skill Level:** Intermediate  
**Technique:**  
 Bead Embroidery

Learn about attaching and embellishing metal filigree to bead embroidery with some different interesting stitches. The neck chain is woven in a variation of the square stitch with larger beads.

**Betty Stephan Trunk Show Apr 3-5 (during regular store hours)**

 **Corinne Loomer**
**Bead Embroidery Independent Study**

**Tue 1/7, 2/4, 3/3 and 4/7 (11-3)**  
**\$150.00 for the series OR \$50 per class + supplies**

**Prerequisites:** Peyote  
**Skill Level:** All skill levels  
**Technique:** Peyote, Bead Embroidery

This independent study course allows you to be in control of your vision. Learn to stay focused, work independently, plan your creation, organize your ideas and make them a reality. Every month we'll discuss various topics about Bead Embroidery.

 **Carole Tripp**
**Herringbone Bracelet**

**Wed 4/15**  
**(10-1) OR (6-9)**  
**\$25.00 + supplies**

**Prerequisites:** None  
**Skill Level:** Beginner  
**Technique:** Tubular Herringbone

Learn tubular herringbone also known as N'debele while making this fashionable bracelet.

 **Liz Smith**
**Just Hangin' Around: A Study in Ropes & Components**

**Sat 4/18 (10-5)**  
**\$85.00 + supplies**  
**Prerequisites:** Peyote  
**Skill Level:** All Skill Levels  
**Technique:** Peyote, Bead Weaving

Explore a variety of different beaded rope techniques - with an emphasis on creating your own unique versions. Then fabricate some hanging components/baubles that will complement your special piece of wearable art. Come join us for a day of creating, constructing, and embellishing.

 **Linda Kavalsky**
**Panel Bracelet**

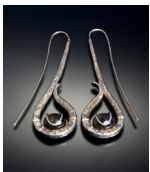
**Sun 4/19 (10-5)**  
**\$80.00 + supplies + \$15 materials fee**

**Prerequisites:** Some Wire Work  
**Skill Level:** All Skill Levels  
**Technique:** Sheet Metal Manipulation, Fusing,  
 Soldering, Cold Connections

This panel bracelet is very versatile as you enhance each section with a different technique. There are many options to make yours a unique piece of art. Explore soldering, fusing mixed metals, hammering texture, cold connections, stamping, and more. Add a stone or crystal to contact the metal and give it a pop!

 **Anne Mitchell**

Take 2 classes ~ \$185 ♦ Take 3 classes ~ \$275 ♦ Take all 4 classes ~ \$360

**Ancient Ottoman Earrings**

**Thu 4/23 (10-5)**  
**\$95.00 + \$95 kit fee**  
**Prerequisites:** Basic Wire  
**Skill Level:** All Skill Levels  
**Technique:** Forging, Riveting

Using PMC, shape, texture and create these matching bases. After firing, fine tune the shape, solder the cabochon bases and earwires in place and lastly set two perfectly matching AAA quality citrine semi-precious cabochons.

**Hand Forged Riveted Latch Bangle**

**Fri 4/24 (10-5)**  
**\$95.00 + \$115 kit fee**  
**Prerequisites:** Basic Wire  
**Skill Level:** All Skill Levels  
**Technique:** Wire Forging, Fusing, Soldering

Create this amazing bangle featuring an 8 gauge textured and forged support that is riveted onto a base of 20 gauge fine silver sheet. After soldering a round tube bezel setting cup onto the base, forge the latch hook from 8 gauge round wire. Each bangle will be fit to size and after tumble and patina set a AAA non-heat treated 6mm round faceted citrine.

**Patterned Gate Cuff Bangle**

**Sat 4/25 (10-5)**  
**\$95.00 + \$95 kit fee**  
**Prerequisites:** Basic Wire  
**Skill Level:** All Skill Levels  
**Technique:** Forging, Riveting, Fusing

Take a forging and texturing journey with me and create this amazing gate latch bangle. We will texture the heavy gauge base then create the hook and loop. Once those tasks are completed we will rivet pattern wire to the base and flair out the edges to give the base dimension, the create the hand forged tension gate latch.

**Call of the Wild- A Personal Totem**

**Sun 4/28 (10-5)**  
**\$95.00 + \$110 kit fee**  
**Prerequisites:** Basic Wire  
**Skill Level:** All Skill Levels  
**Technique:** Forging, Riveting, Fusing

This is an action packed full day of creating your personal PMC animal totem pendant. All each participant needs to bring to class is a mini animal cookie cutter of your favorite creature that speaks to your soul. Spend the day with me and create your totem.

**Anne Mitchell Trunk Show Apr 23-26 (during regular store hours)**

# Wing Classes



Mon	Tue	Wed	Thu	Fri	Sat	Sun
<b>January</b>		1 CLOSED HAPPY NEW YEAR!	2 New Year's Sale January 2-12	3	4 Special Event Beading at the Castle (11-5)	5
6 CLOSED	7 Corinne Loomer Bead Embroidery Independent Study (11-3)	8 Carole Tripp Peyote Bracelet (10-1) OR (6-9)	9	10 Cliff Swain-Salomon Pearlesque Earrings (10-5)	11 Cliff Swain-Salomon Downton Deco Necklace (10-5)	12 Cliff Swain-Salomon Dancing Wisteria Bracelet (10-5)
13 CLOSED	14 Beading at the Castle (11-3)	15 Carole Tripp Square Stitch Bracelet (10-1) OR (6-9)	16 Marlene McCall Beading Basics (6-9)	17	18 Special Event BATC Day (11-5)	19
20 CLOSED	21	22	23 Jo Ellen Lee Traditional Knotting with a Contemporary Twist (6-9)	24	25	26 Linda Kavalsky Explorations in Enameling (10-5)
27 CLOSED	28 Beading at the Castle (11-3)	29	30	31		
<b>February</b>					1 Jo Ellen Lee Chain Stitch Frenzy (1-4)	2 Super Bead Day (noon-5)
3 CLOSED	4 Corinne Loomer Bead Embroidery Independent Study (11-3)	5 Carole Tripp RAW Embellished Bracelet (10-1) OR (6-9)	6 Marlene McCall Beading Basics (6-9)	7	8	9 Special Event BATC Day (noon-5)
10 CLOSED	11 Beading at the Castle (11-3)	12 Jean Power Ligilo (10-5)	13 Jean Power Lisa Class (10-5)	14 Jean Power Karratu (10-5)	15 Jean Power Treasure Links (10-5)	16 Jean Power MidMod Pots (10-5)
17 CLOSED	18	19 Carole Tripp CRAW Bracelet (10-1) OR (6-9)	20	21	22 Melanie Schow Victorian Pearl (10-5)	23
24 CLOSED	25 Beading at the Castle (11-3)	26 Heather Kingsley-Heath Viola (10-5)	27 Heather Kingsley-Heath Fragmentary Relic (10-5)	28 Heather Kingsley-Heath Anney (10-5)	29 Heather Kingsley-Heath Verona (10-5)	
<b>March</b>						1 Heather Kingsley-Heath Constanza (10-5) <i>Heather's Trunk Show (cont.)</i>
2 CLOSED	3 Corinne Loomer Bead Embroidery Independent Study (11-3)	4	5 Marlene McCall Beading Basics (6-9)	6	7 Daylight Savings Time begins Set your clocks ahead when you go to bed	8
9 CLOSED	10 Beading at the Castle (11-3)	11	12 Cynthia Rutledge The Secret Lies Within (10-5)	13 Cynthia Rutledge Feathers of the Peacock (10-5)	14 Cynthia Rutledge A Cut Above (10-5) <i>Cynthia Rutledge Trunk Show</i>	15 Cynthia Rutledge Arabesque Collar (10-5)
16 CLOSED	17	18	19	20 Sarah Thompson Entangled Pendant (10-1) Mini Monogram Pendant (2-5)	21 Sarah Thompson Simplicity Pendant (10-5) <i>Sarah Thompson Trunk Show</i>	22 Sarah Thompson Serenity Pendant (10-5)
23 CLOSED	24 Beading at the Castle (11-3) Sabine Lippert OR Monique Rising Sun (10-5)	25	26 Jo Ellen Lee Traditional Knotting with a Contemporary Twist (6-9)	27 Robin Nadon Lampwork Trunk Show Mar 28 (10-5)	28 Sabine Lippert A Master Class: Double CRAW Dimensions (10-5) <i>Sabine Lippert Trunk Show</i>	29 Sabine Lippert A Master Class: Double CRAW Dimensions (10-5) (cont.)
<b>April</b>		1 Sabine Lippert Duchess of D OR Rising Sun (10-5)	2	3 Betty Stephan Nightingale Necklace (10-5) <i>Betty Stephan Trunk Show</i>	4 Betty Stephan Gaia (10-5)	5 Betty Stephan Ariana (10-5)
6 CLOSED	7 Corinne Loomer Bead Embroidery Independent Study (11-3)	8 Passover begins at Sundown	9	10	11	12 CLOSED FOR EASTER
13 CLOSED	14 Beading at the Castle (11-3)	15 Carole Tripp Herringbone Bracelet (10-1) OR (6-9)	16 Marlene McCall Beading Basics (6-9)	17	18 Liz Smith Just Hangin' Around: A Study in Ropes & Components (10-5)	19 Linda Kavalsky Panel Bracelet (10-5)
20 CLOSED	21	22	23 Anne Mitchell Ancient Ottoman Earrings (10-5)	24 Anne Mitchell Hand Forged Riveted Latch Bangle (10-5) <i>Anne Mitchell Trunk Show</i>	25 Anne Mitchell Patterned Gate Cuff Bracelet (10-5)	26 Anne Mitchell Call of the Wild - A Personal Totem (10-5)
27 CLOSED	28 Beading at the Castle (11-3)	29	30			